



MONTHLY MEMBERSHIP PROGRESS REPORT

District 3 H

Results as of: 5/31/2017

GMT: HAL GRIFFIN

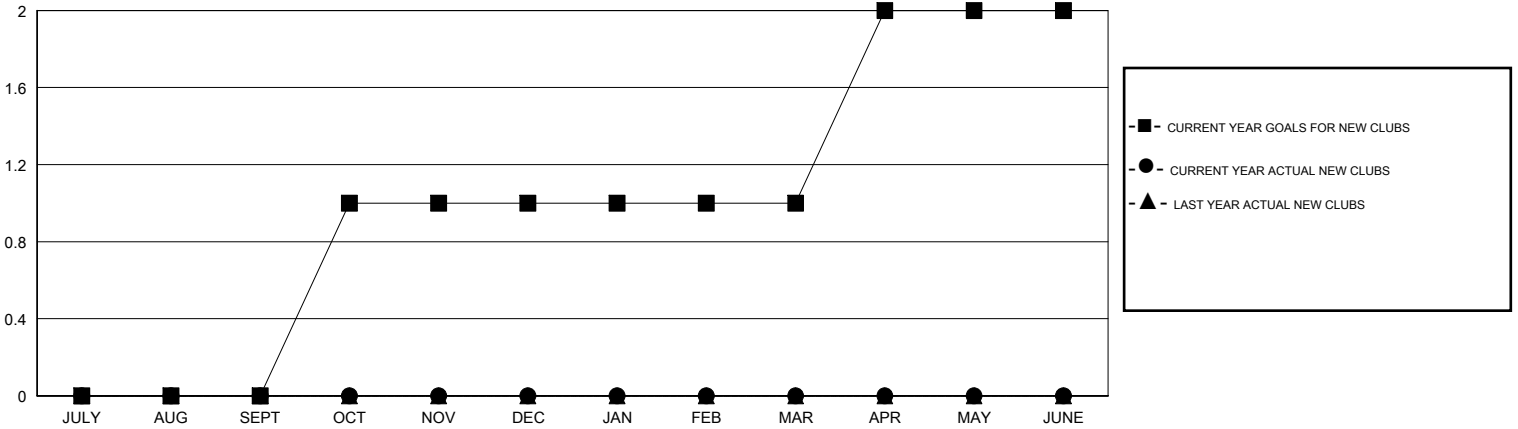
LOCATION OKLAHOMA

GMT CA

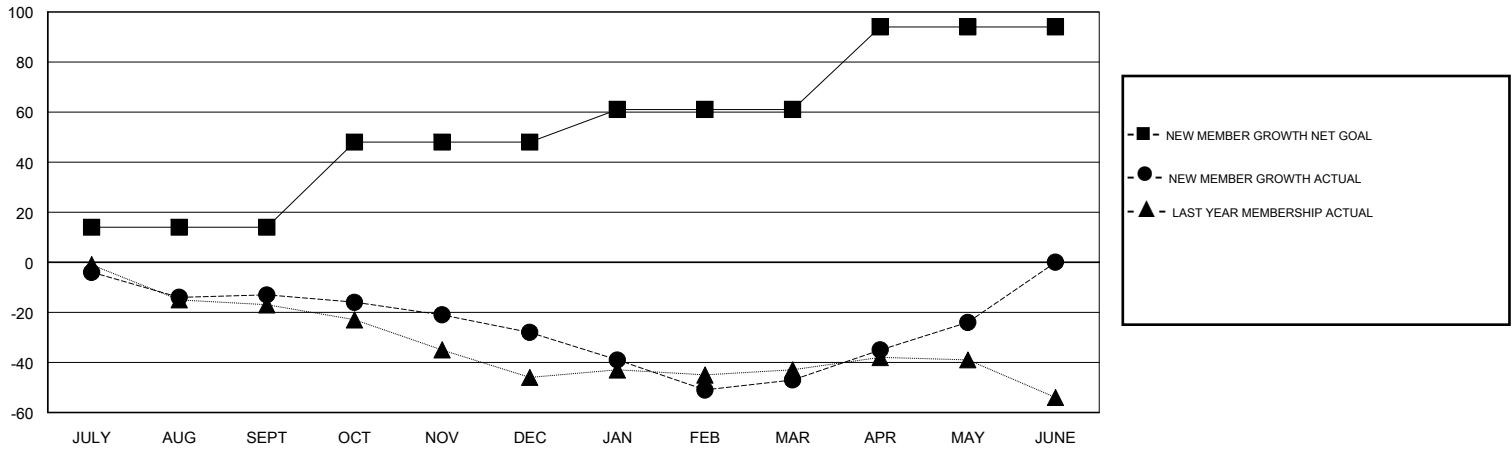
Clubs			
RESULTS FOR 2016-2017			
QUARTER	NEW CLUB GOAL	NEW CLUBS	DROPPED CLUBS
JULY/AUG/SEPT	0	0	1
OCT/NOV/DEC	1	0	0
JAN/FEB/MAR	0	0	0
APR/MAY/JUNE	1	0	0

Members			
RESULTS FOR 2016-2017			
QUARTER	NEW MEMBER GROWTH NET GOAL (not reinstated or transfers)	NEW MEMBER GROWTH ACTUAL (not reinstated or transfers)	DROPPED MEMBERS ACTUAL (including transfers)
JULY/AUG/SEPT	14	17	30
OCT/NOV/DEC	34	8	23
JAN/FEB/MAR	13	19	38
APR/MAY/JUNE	33	40	17

GOALS AND ACTUAL NEW CLUBS CUMULATIVE



GOALS AND ACTUAL MEMBERS CUMULATIVE



DROPPED CLUBS: 1	22 CLUBS OF 27 ADDED 1 OR MORE NEW MEMBERS	<u>GENDER DISTRIBUTION</u>	
DROPPED MEMBERS		MALE	556 (72.97%)
DECEASED	CLICK HERE FOR CUMULATIVE MEMBERSHIP DATA	FEMALE	206 (27.03%)
CLUB CANCELLED		TOTAL FAMILY UNIT MEMBERS	69
OTHER		FAMILY MEMBERS PAYING HALF DUES	35
TOTAL		108	